

# DATA SCIENCE & AI

Advanced Certification Program

In collaboration with



Understand Generative AI and its potential

Leverage the Microsoft Advantage with Professional Level Training from Microsoft

**Exposure to prominent tools:**



ChatGPT



Bard



DALL-E



Midjourney

and more





## About The Course

In partnership with Microsoft, the Advanced Data Science and AI Program by **Shelf Solutions** propels your data science and AI career, providing world-class training and essential skills. Offering comprehensive instruction in sought-after data science and machine learning skills, the program ensures hands-on experience with vital tools like Python, SQL, Excel, machine learning, Tableau, Generative AI, prompt engineering, ChatGPT, and more. Designed to be job-ready, the course leverages our 10+ years of experience in the US IT recruitment field, ensuring that upon completion, you are well-equipped to excel in the industry. Achieve expertise in data science through a deep exploration of data interpretation nuances, mastery of machine learning, and the acquisition of powerful programming skills, elevating your career to new heights.

## About Microsoft and Shelfsolutions Collaboration

Microsoft is a leading technology company offering a wide range of technology and consulting services. Each year, Microsoft invests heavily in research and development, with an annual R&D budget of over \$20 billion. Microsoft has achieved numerous accolades, including three Turing Awards, 10 US National Medals of Technology and Innovation, and 10 US National Medals of Science.

A partnership between Microsoft and **Shelf Solutions** introduces students to the best-in-class applied learning experience, making them experts in data and AI. In collaboration with Microsoft, this program delivers a top-notch, industry-relevant curriculum and prepares students for any job role in the data science domain.

## WHY ARE Data Science and AI important?

**Data Science, Machine Learning and AI** is redefining our way of life, enabling machines to do what people once thought only humans could do. It is also revolutionizing the way we do business. The global ML market is projected to be \$30.6B by 2024, growing annually by 43%.



In terms of revenue, the global DS, ML, AI market is projected to exceed value of US\$ 2.8 Bn by 2030. Companies Will Invest Up to \$1.1 Trillion in IoT by 2023. The Total Economic Impact of IoT Could Range Between \$4 and \$11 Trillion per year by 2025.



**Virtual** Personal Assistants



**Online** Fraud Detection



**Search** Engine Result Refining



**Email** Spam & Malware Filtering



**Social** Media Services

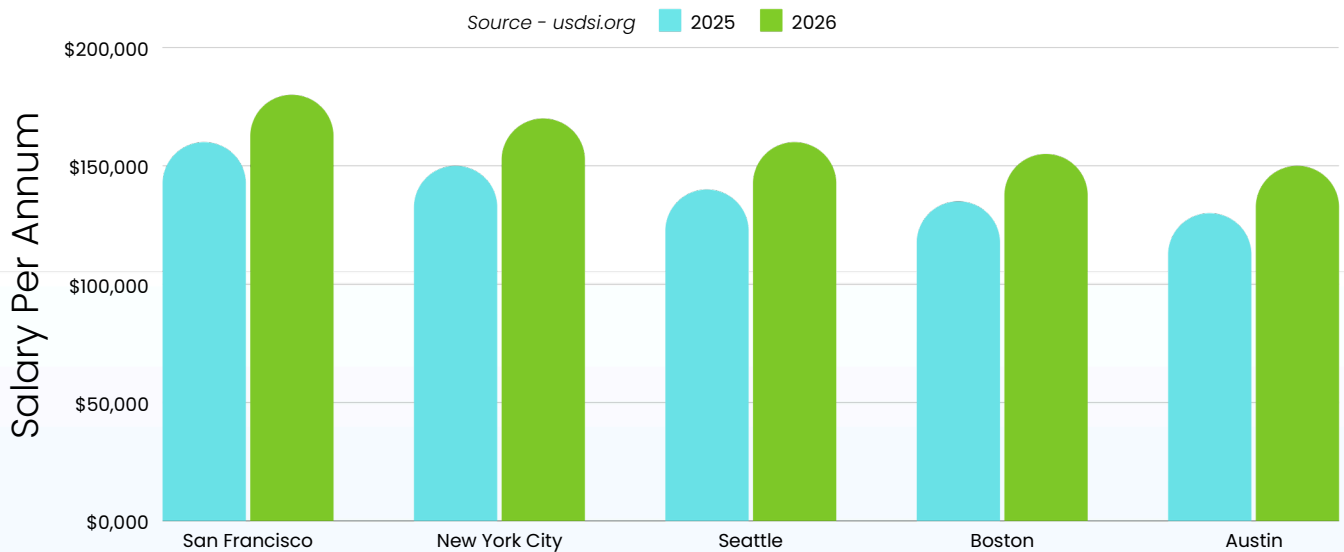


**Product** Recommendations



## CURRENT TRENDS IN DS,ML-AI JOB MARKET

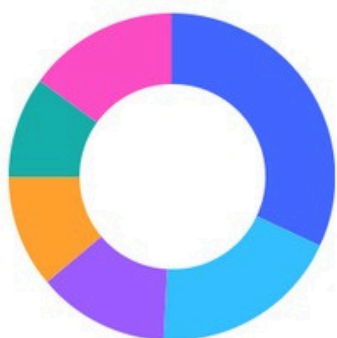
In the U.S., Data Science, Machine Learning, and AI are booming, with a 36% job growth projected from 2023 to 2033, adding nearly 3 million jobs. Entry-level salaries range from \$70,000 to \$90,000, while experienced professionals can earn \$120,000 to \$160,000. High-demand roles include Machine Learning Engineers, Data Scientists, AI Research Scientists, and NLP Engineers. The integration of AI and ML is driving innovation and economic growth, highlighting the importance of acquiring these skills.



## BATCH PROFILE

This program caters to working professionals from variety of industries and backgrounds; the diversity of our students adds richness to class discussions and infractions.

### Industry



Information Technology	- 32%
BFSI	- 19%
Software product	- 13%
Pharma & Healthcare	- 11%
Retail	- 10%
Others	- 15%

### Companies Hiring

amazon

EY  
Building a better  
working world

Fidelity

Johnson & Johnson

vodafone

BROADCOM

accenture

NOMURA

ERICSSON

Infosys

nvidia

TATA CONSULTANCY SERVICES

## PROGRAM HIGHLIGHTS

This 6-month program is uniquely designed by Shefsolutions, Microsoft and industry leaders to help you learn exactly what the job market demands.



**Industry-recognized  
certificate from Microsoft  
and Shefsolutions**



**100% Job Placement through  
our in-house recruitment  
agency with over 250 hiring  
partners**



**Industry-relevant skills  
for new age IoT , ML, DS &  
AI**



**Hands-on program and  
Industry-Grade Capstone  
Projects**



**Designed by leading  
academic and industry  
experts along with  
Microsoft**

## PROGRAM BENEFITS



### Certificate/Credentials

Advanced Data Science & AI Program completion certificate and Industry-recognized certificate from Microsoft



### Curriculum

Core curriculum delivered in live online classes by industry experts and Microsoft



### Practical Knowledge

Live interactive sessions on the latest AI trends, such as ChatGPT, Generative AI, prompt engineering, and more.



### Hands on Projects

Capstone from various domains and industry relevant projects



### Familiarity with essential tools

Gain exposure to Python, Tableau, SQL, ChatGPT, OpenAI, Dall-E and other prominent tools.



### Support and Guidance

Lifetime access to self-paced learning content through our Learning Management System



### Personalised Attention

Small batch sizes to ensure that each student receives personalized attention and tailored instruction



### Doubt Clearing Sessions

24x7 subject matter expert support for your technical/non-technical doubts



### Immersive Learning Experience

A unique learning ecosystem to give you an offline-like immersive experience



### Career Guidance and 100% Placement Support

100% Job assistance through our in-house recruitment agency with over 250 hiring partners

# Program Outcomes



- ✓ Understand Generative AI, its landscape, and practical applications
- ✓ Learn about prompt engineering, explainable AI, conversational AI, large language more
- ✓ Perform scientific and technical computing using the SciPy package and its sub-packages such as Integrate, Optimize, Statistics, IO, and Weave
- ✓ Grasp fundamentals of Excel analytics functions and conditional formatting
- ✓ Understand the tools and techniques used in business analysis planning and monitoring
- ✓ Understand and use linear and non-linear regression models and classification techniques for data analysis
- ✓ Learn to visualize data using Tableau and Power BI and become proficient in building interactive dashboards
- ✓ Gain an in-depth understanding of data structure and data manipulation
- ✓ Apply effective prompt engineering techniques to improve the performance and control the behavior of generative AI models
- ✓ Obtain a comprehensive knowledge of supervised and unsupervised learning models such as linear regression, logistic regression, clustering, dimensionality reduction, K-NN, and pipelines
- ✓ Master the concepts of recommendation engines and time series modeling Gain practical
- ✓ mastery over principles, algorithms, and applications of machine learning
- ✓ Gain expertise in mathematical computing using the NumPy and scikitlearn package

# PROGRAM CURRICULUM LEARNING PATH

## Data Analysis & Data Science with Python

### Module- 1: Basics of Python Programming

- ✓ Introduction to Python
- ✓ Variables and Datatypes
- ✓ Conditional Statement
- ✓ Commands in Python
- ✓ Loops in Python
- ✓ Functions in Python
- ✓ OOPs Concept

### Module- 2: Libraries of Python Programming with EDA

- ✓ Numpy
- ✓ Pandas
- ✓ Matplotlib
- ✓ Seaborn
- ✓ Data Cleaning

## Applied Maths, Statistics and Machine learning

### Module- 3: Statistics for Data Science

- ✓ Introduction to statistics
- ✓ Descriptive and Inferential Statistics
- ✓ Percentage vs Percentile
- ✓ Standard Deviations and Z\_score
- ✓ Types of Distribution
- ✓ Hypothesis Testing

### Module- 4: Machine Learning- Supervised

- ✓ Introduction & Types of machine learning
- ✓ Supervised ML
- ✓ Linear Regression ML Algorithm
- ✓ Logistic Regression
- ✓ KNN Algorithm
- ✓ SVM
- ✓ Decision Tree Algorithm
- ✓ Random Forest Algorithm
- ✓ Ensemble Learning
- ✓ Hyperparameter tuning



# PROGRAM CURRICULUM LEARNING PATH

## Module- 5: Machine Learning- Unsupervised

- ✓ Introduction to the Unsupervised ML Algorithm
- ✓ Clustering Techniques
- ✓ K Means Clustering Hierarchical Clustering
- ✓ Dimensionality Reduction- PCA

## Module- 6: Deep Learning and AI

- ✓ Introduction to Deep Learning
- ✓ Artificial Neural Network
- ✓ Convolutional Neural Network
- ✓ Recurrent Neural Network
- ✓ LSTM
- ✓ Natural Language Processing

## Database Management with MySQL

### Module- 7: MySQL

- ✓ Understanding databases
- ✓ Reading the files and database
- ✓ Performing CRUD Operation on Database
- ✓ Working with Build in database
- ✓ Database Connectivity
- ✓ Joins Operation
- ✓ Subquery

## Data Visualization & Story Telling

### Module- 8: Tableau

- ✓ Create the Sheets/Dashboards
- ✓ Create a Table of Contents Sheet
- ✓ Design the Table of Contents
- ✓ Add Navigation Actions
- ✓ Set Up Dashboard for Table of Contents
- ✓ Test the Navigation Links

### Module- 9: Power Bi and Google Data Studio

- ✓ Create the Reports/Pages
- ✓ Create a Table of Contents Page
- ✓ Design the Table of Contents
- ✓ Add Buttons or Text for Navigation
- ✓ Set Up Bookmarks
- ✓ Add Action Links to Buttons/Text

# PROGRAM CURRICULUM LEARNING PATH

## AI and Data Engineering with MLOps and Cloud Integration

### Module- 10: Data Engineering Tools

Introduction to Data Engineering

Data Collection

Data Storage

Data Processing

✓ Data Integration

✓ Data Pipelines

✓ ETL (Extract, Transform, Load)

### Module- 11: NPL with MLOPS

✓ Cloud Essentials: Intro to AWS

✓ Working with AWS: case study

✓ MLOps: Introduction

✓ MLOps: Data Lifecycle

✓ MLOps: Model Lifecycle

✓ MLOps Assignment

✓ Advanced NPL

✓ MLOps + Deployment: NPL (Theory)

✓ MLOps + Deployment: NPL (Assignment)

### Module- 12: AI Strategy

✓ AI Strategy Framework, Structured Problem Solving/ Data Storytelling

✓ Mapping ML with Data architecture strategy

✓ Executing AI Strategy

✓ AI strategy: Assignment

### Explainable AI

### Prompt Engineering

### Advanced Prompt Engineering Techniques

 Microsoft **Azure Data Fundamentals**

## CAPSTONE & LIVE SESSION PROJECT LEARNING PATH

**The projects and assignments will help you accumulate real-world experience in different industries.**



Automotive Industry



Education Industry



Banking Sector



Entertainment Industry



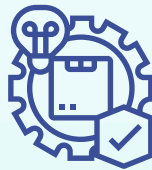
Healthcare Industry



Manufacturing Segment



Retail Industry



Production industry



Finance Sector





# CAPSTONE PROJECT

Industry projects will be a part of your Advanced Certification In Applied Data Science, Machine Learning & AI to consolidate your learning. Industry projects will ensure you have the real-world experience to start your career in DS, ML-AI.

- 10+ Essential Tools
- Designed by Industry Experts
- Get Real-world Experience



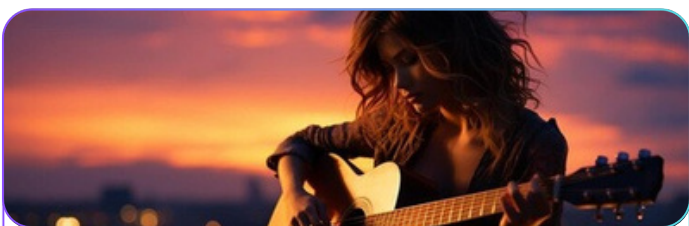
## Sales Analysis

Utilize Python to analyze a clothing company's sales data for the fourth quarter across states to help the company make data-driven decisions for the coming year.



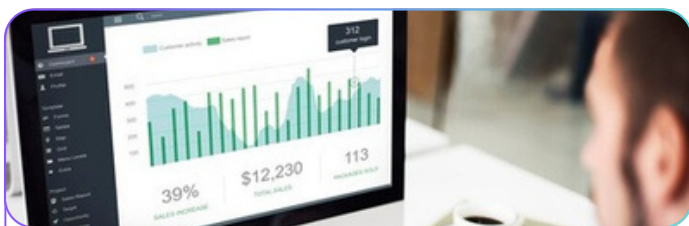
## Employee Performance Analysis

Create ML programs to understand different factors affecting employee turnover. Use clustering, the SMOTDE technique, and the K-fold cross-validation model to analyze performance and suggest employee retention strategies.



## Classification of Songs

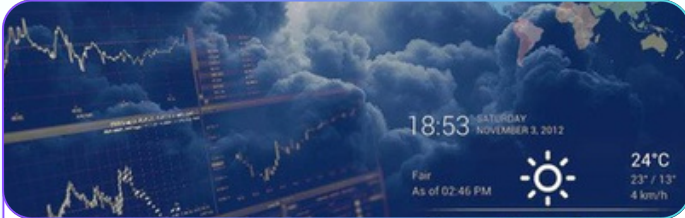
Perform exploratory data analysis and cluster analysis to create personalized song lists and an efficient recommendation system.



## Interactive Sales Dashboard

Create an interactive sales dashboard for an apparel OEM in Tableau for the sales department to use for ad-hoc analysis and reporting.

# CAPSTONE PROJECT



## Weather Prediction

Create a classification model using ten years of rainfall data to predict the weather for different locations across the world.



## Credit Card Fraud Analysis

Utilize data science and machine learning methodologies to identify fraudulent credit card transactions so that end customers are not charged for items they did not purchase



## Auto Image Captioning

Automatic image captioning is widely used by search engines to retrieve and show relevant search results to the users. For example - to categorize personal multimedia collections, for automatic product tagging in online catalogs, and other areas of business and researches.



## Telecom Churn Prediction

You will be provided with the 'Telecom Churn' dataset. Use it to create a model to predict which customer will switch to other telecom service providers, based on the relevant customer data.



## Twitter Sentiment Analysis

Analyzing tweets helps us understand people's thoughts and sentiments on popular topics. In this project, you'll use Tweepy, TextBlob, NLTK, and other NLP libraries to analyze sentiments from trending Twitter tags.



## Credit Score Prediction

A bank plans a new loan scheme and wants to analyze customer data to see how earnings relate to credit scores. Using clustering, they aim to identify high credit score clusters to guide the new loan scheme.



## CAPSTONE PROJECT

**Housing Price Prediction**

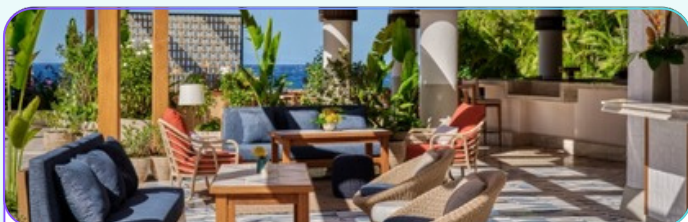
Using the 1990 California census data, which includes various demographics, we need to create a model with Pandas, SciPy, and NumPy to predict housing prices based on the provided details.

**COVID Analysis in US**

The COVID-19 pandemic is a major global challenge, with cases rising daily. To understand its impact, web scrape data from the official government website and compare COVID trends in the US with global trends.

**Forecast Air Passenger Traffic**

An Airline called Star Air has the data of its passengers across months. The data is classified in date/time and the passengers travelling per month. Build a model to forecast the demand in Airplanes.

**Resort Menu Prediction**

EmeraldOyster faces high meal costs at its resort restaurants. To address this, identify customers' economic classes using collected data to help redesign the menu and choices accordingly.

**Analyze & Visualize Employee Attrition**

Employee retention is crucial for company growth. Identify factors causing attrition, explore reasons for departures, and predict employee turnover by creating a Streamlit web app that collects user inputs online.

**Big Mart - Customer Segmentation**

Big Mart's data scientists have gathered 2013 sales data for 1559 products across 10 stores. The CEO wants to understand customer demographics and retention to help the marketing team develop targeted strategies.



# Tools Covered



## PLACEMENT ASSISTANCE PROGRAM

ShefSolutions Inc., the parent company of ShefSolutions LLC, is dedicated to providing comprehensive job assistance to students who complete their courses. With over a decade of experience in the recruitment industry, we understand the evolving job market and emerging industry requirements. This expertise ensures our courses are in high demand and tailored to meet industry standards, making students job-ready upon completion.

Our program bridges the gap between education and employment by offering career counseling, resume building, interview preparation, and direct connections to potential employers. We continuously update our curriculum to reflect the latest trends and skills sought by employers, ensuring our students are well-prepared and connected to numerous job opportunities. **We are proud to have an impressive placement rate of 80%,** demonstrating our commitment to student success.

At ShefSolutions, we empower our students with the tools and resources they need to succeed in their careers. Our commitment to their success is unwavering, and we strive to provide an educational experience that opens doors to promising career paths. Through our dedicated efforts, we aim to make a significant impact on the lives of our students, helping them achieve their professional goals and aspirations.



# 100% PLACEMENTS ASSISTANCE



## Dedicated Placement Team

Assign dedicated coordinators to assist in job searches and provide personalized support. Leverage a network of over 250 hiring partners to connect students with potential employers.



## Leadership Skill Development Sessions

Recurring training sessions with experts to help learners Develop Interpersonal & Leadership Skills.



## 1-on-1 Career Mentoring Sessions

One-on-one Career Mentoring sessions on how to develop the right skills and attitude to secure a dream job.



## Exhaustive Interview Preparation

Expert tips, sample interview questions, mock interviews with constructive feedback from industry experts to gain hands on experience of technical rounds, HR round, and more.



## Job Search Assistance & Job Feeds

Grant access to exclusive job portals with listings from ShefSolutions Inc.'s network of hiring partners. Send personalized job alerts based on students' skills and career interests.



## Profile Building Assistance

A dedicated Career Coach will provide expert tips on how to create an attractive, relevant resume and LinkedIn profile.



## OUR TOP RECRUITERS

accenture



verizon✓

Tech  
Mahindra

Alphabet

amazon

Honeywell



IBM

KPMG



Microsoft

SAMSUNG



CISCO

Apple

intel



Walmart\*

## OUR ALUMNI WORK AT

Capgemini

Cognizant

Deloitte.

genpact

Tech  
Mahindra

Alphabet

amazon

Honeywell



ADP

KPMG

IKEA

Humana

intel



ACADIA  
HEALTHCARE

accenture



citi

verizon✓

## WHAT'S IN IT FOR YOU

After completing the program, you will receive an industry recognized Course Completion Certificate in **Advanced Data Science and AI** from ShefSolutions, along with a **Microsoft Azure** Certification.

Candidates will be able to explore a wide range of AI jobs available globally, such as...

### Entry-Level:

- AI Research Engineer
- Data Analyst
- Associate Machine Learning Engineer
- Research Analyst



### Mid Level:

- Machine Learning Engineer
- AI Software Engineer Associate
- Data Scientist
- IoT Product Manager

### Senior Level:

- Sr. Data Scientist
- Machine Learning Research Scientist
- Deep Learning Expert
- Chief Internet of Things Officer



# Certificate

Upon completion of this Advanced Program, you will receive industry recognized certificates from **Microsoft** and **Shefsolutions** in the Data Science courses in the learning path. These certificates will testify to your skills as an **expert in Data Science & AI**.







ShefSolutions Inc. is a leading technology consulting and staffing firm headquartered in Dover, Delaware. We specialize in providing high-quality consulting services and staffing solutions across various industries, including IT, healthcare, project management, and more. Our team of experienced and dedicated professionals is committed to delivering innovative solutions that drive success for our clients.

At ShefSolutions Inc., we pride ourselves on our stability, strength, and national reach. Our mission is to empower businesses by connecting them with top talent and providing strategic consulting services that enhance their operational efficiency and growth. We believe in building long-term relationships with our clients and partners, ensuring mutual success and continuous improvement.

#### Contact Details

##### Shefsolutions inc.

- Address: 8 The Green Suite R, Dover, DE 19901
- Phone: +1 (888) 927-7072
- Website: <https://shefsolutionsinc.com/>
- Email: [support@shefsolutionsinc.com](mailto:support@shefsolutionsinc.com)
- LinkedIn: <https://www.linkedin.com/company/shefsolutions/>

##### Shefsolutions LLC.

- Address: 30 N Gould St, Sheridan, WY, 82801, USA
- Phone: +1 (888) 927-7072
- Website: <https://shefsolutionsllc.com/>
- Email: [info@shefsolutionsllc.com](mailto:info@shefsolutionsllc.com)
- LinkedIn: <https://www.linkedin.com/company/shefsolutionsllc/>